

K L E R A



the fusion of
ECO-friendly
materials
in a green design





KLERG -- D



KLERW -- DA





KLERC - - A

KLERG - - AA

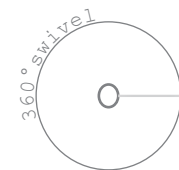


KLERC -- BA



KLERW -- B





KLERC -- C

KLERW -- CA







SHELL

Die-casted aluminium shell for chair & armchair.

TEXTURE

Concentric circles pattern.

BASES

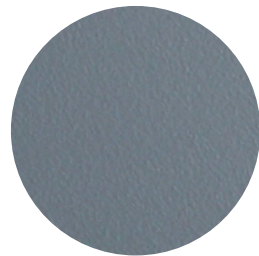
- Stackable chair/armchair with frame in chromed steel, jointed feet with felt.
- 4 Legs Chair/Armchair with frame in lacquered steel, anti-slip gliders assembled.
- Four spoke swivel Chair/Armchair with frame in lacquered die casted aluminium, anti-slip gliders assembled.
- Wooden legs Chair/Armchair made of solid beech wood, Polished Natural, anti-slip gliders assembled.

SUSTAINABILITY

KLERA is created entirely in aluminium, completely recyclable material and having minimum environmental impact. The scrap resulting during working is immediately put back into the production cycle, therefore, nothing is wasted. The modularity of the system also allows for an effective and soundproof disassembling of each single component which can therefore be maintained and substituted without having to replace the complete chair and, at the end of the life cycle, be separated and sent to the respective source for reuse or recycling.



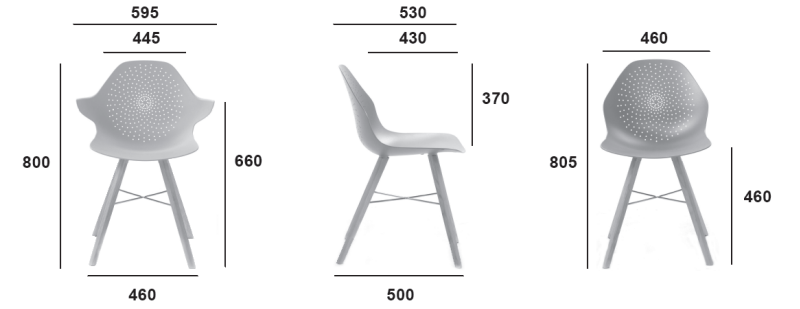
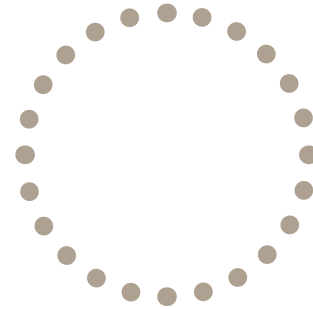
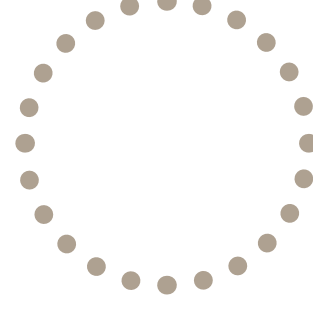
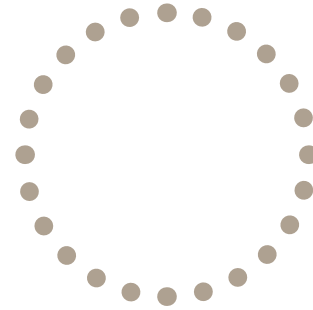
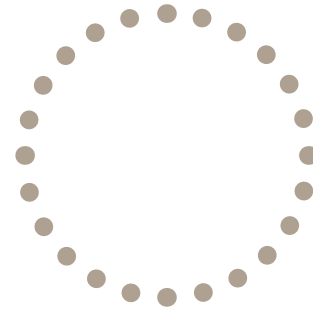
Ral 9002 white



Ral 9006 Grey aluminium



Charcoal AKZO NOBEL NW300M



STANDARD

FEATURES