



ACOUSTIC DESIGN SOLUTIONS 2024

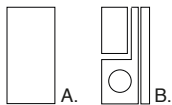


WAVE

Design by OnsiteStudio



PRODUCT CORE



A. cm 136 x H 280 x SP 1,3 | in 53.5 x H 110.2 x TH 0.51
 B. Taglio su misura | Custom cut



FELTRI & TESSUTI | FELTS & FABRICS

CAT A: ECOfelt, PETfelt, Trevira, PETcolor, PETfabric
 CAT B: Tweed, Trace



SEGNI PARTICOLARI | DISTINGUISHING MARKS

Sezioni | Sections

$\alpha_w = 0,25$ | NRC = 0,40

+ cm 2 | in 0,78
 $\alpha_w = 0,70$ | NRC = 0,80

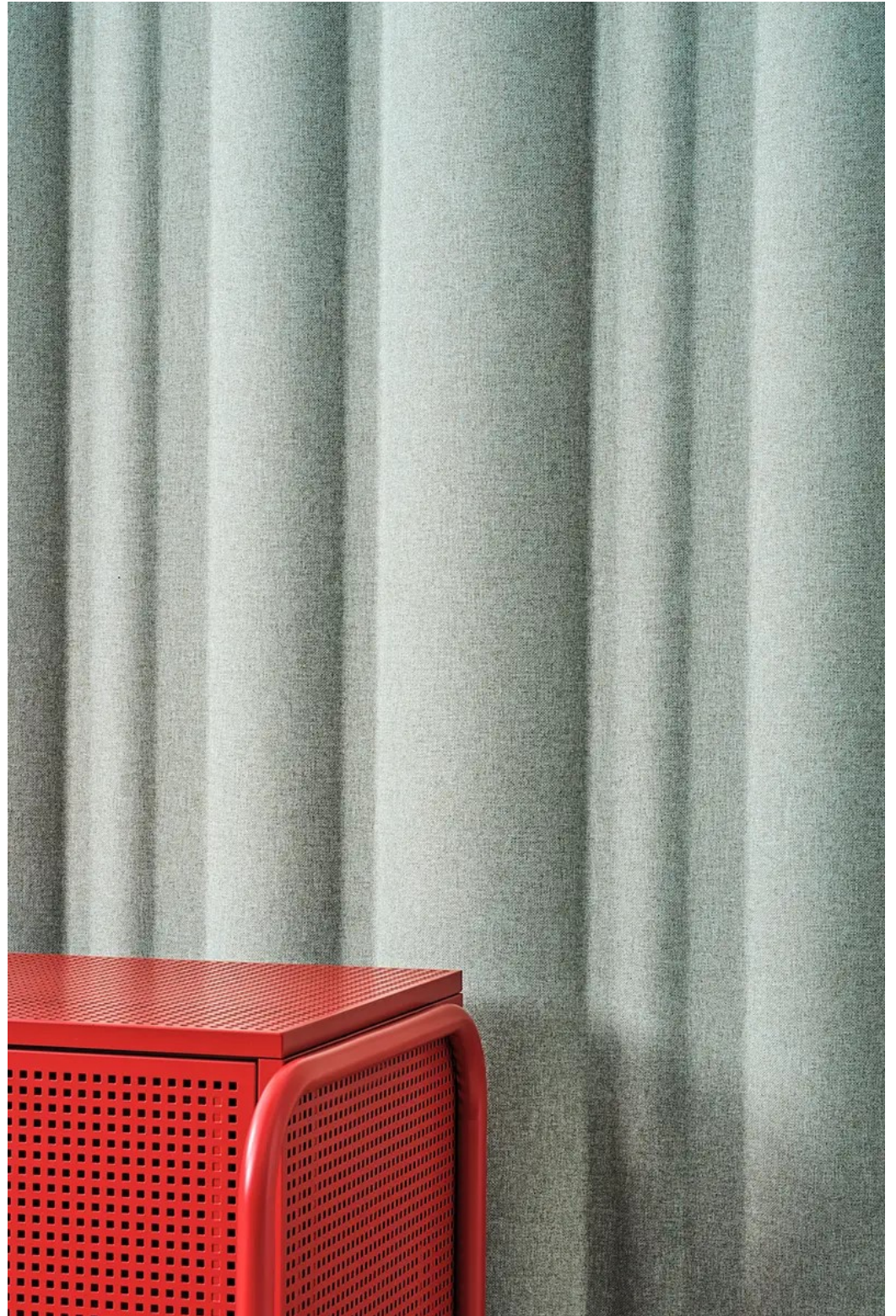
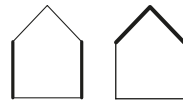
+ cm 4 | in 1,57
 $\alpha_w = 1$ | NRC = 1



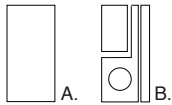


WAVE

Design by OnsiteStudio



PRODUCT CORE



A. cm 136 x H 280 x SP 1,3 | in 53.5 x H 110.2 x TH 0.51
 B. Taglio su misura | Custom cut



FELTRI & TESSUTI | FELTS & FABRICS

CAT A: ECOfelt, PETfelt, Trevira, PETcolor, PETfabric
 CAT B: Tweed, Trace



SEGNI PARTICOLARI | DISTINGUISHING MARKS

Sezioni | Sections

$\alpha_w = 0,25$ | NRC = 0,40

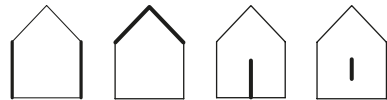
+ cm 2 | in 0,78
 $\alpha_w = 0,70$ | NRC = 0,80

+ cm 4 | in 1,57
 $\alpha_w = 1$ | NRC = 1

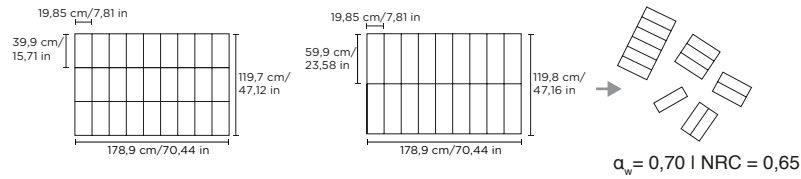




ECODESK



PRODUCT CORE



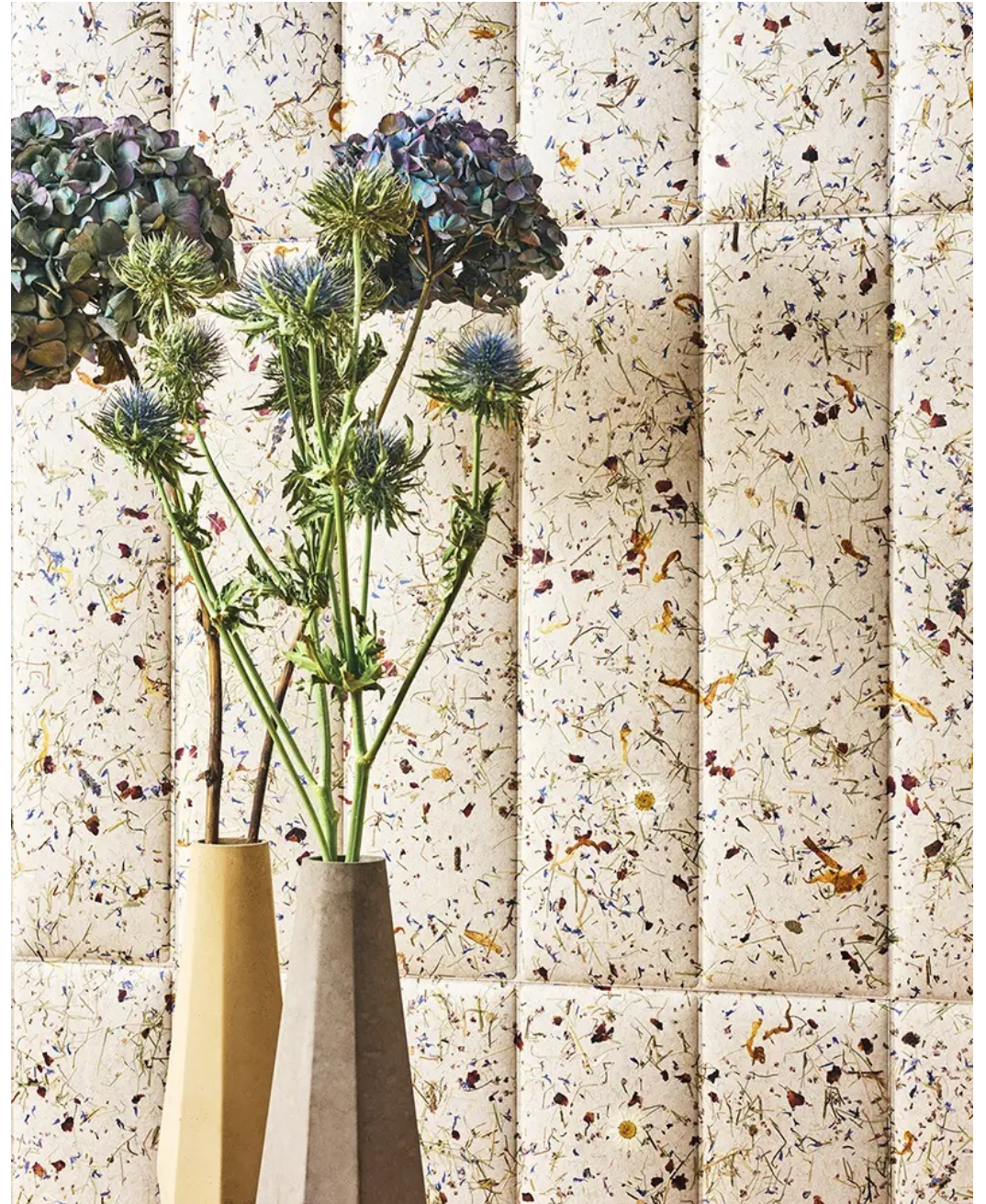
FELTRI & TESSUTI | FELTS & FABRICS

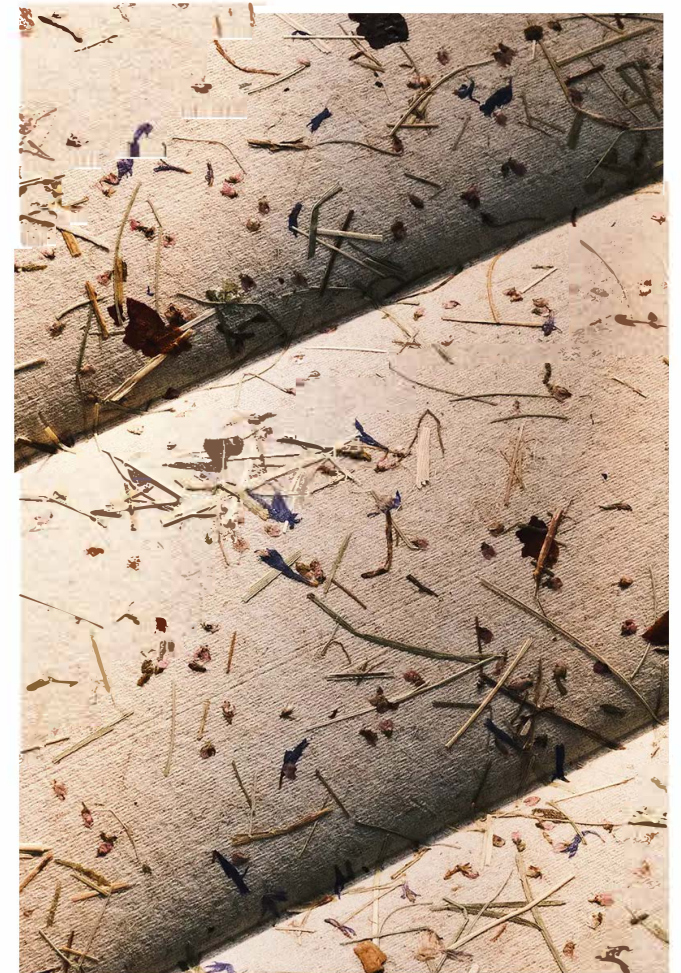
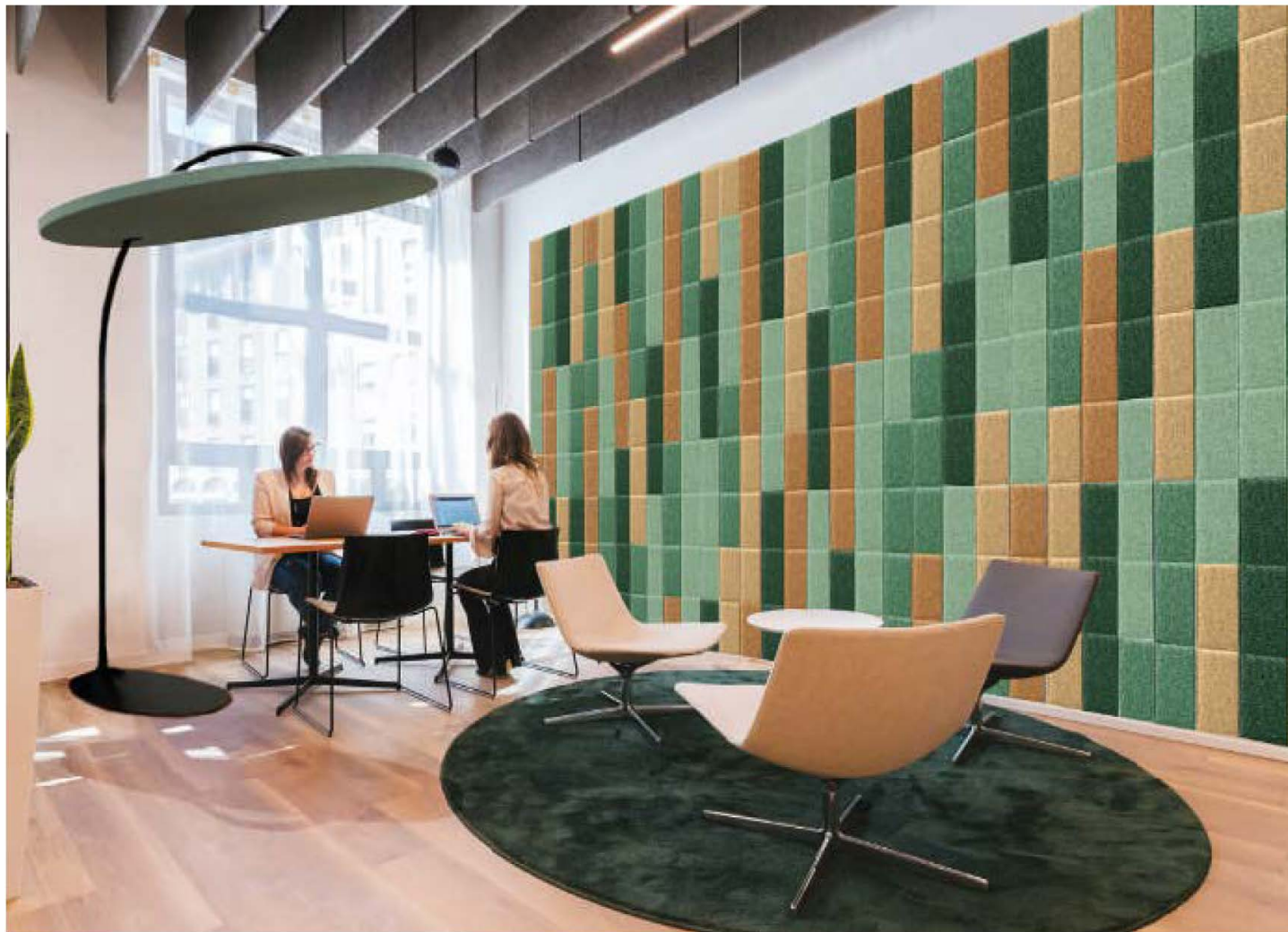
CAT A: ECOfelt, PETfelt, Velvet, Trevira, PETcolor, PETfabric
 CAT B: Tweed, Trace

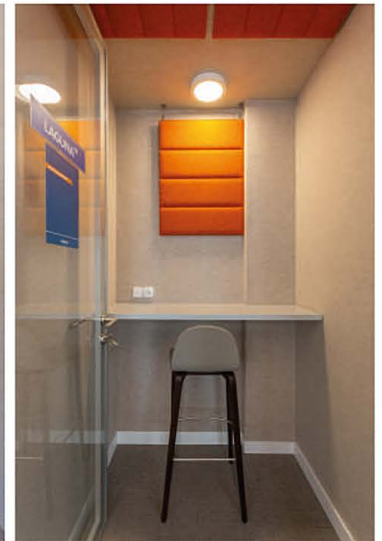
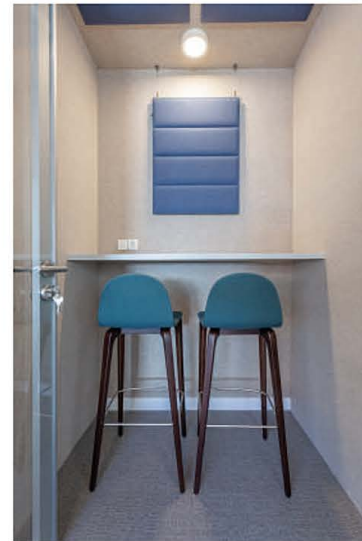
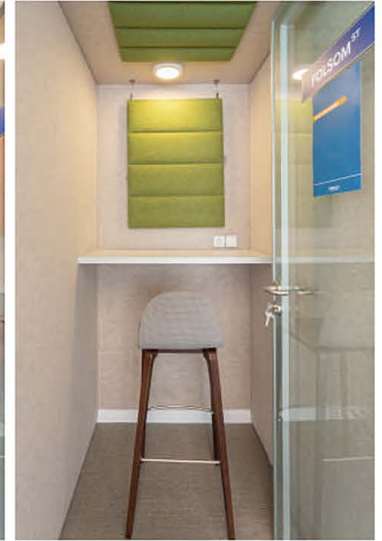


SEGNI PARTICOLARI | DISTINGUISHING MARKS

It's a chocolate bar!

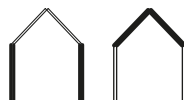




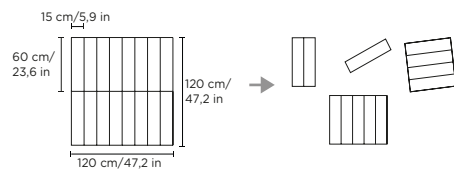




ECOWALL



PRODUCT CORE



cm 120 x H 120 x SP 2 I in 47.2 x H 47.2 x TH
0.79
O Set da 4 I or Set of 4
 $\alpha_w = 0,75$ | NRC = 0,70



FELTRI & TESSUTI | FELTS & FABRICS

CAT A: ECOfelt, PETfelt, Velvet, Trevira, PETcolor, PETfabric
CAT B: Tweed, Trace











NEW!

ECORANGE U



PRODUCT CORE



A. cm 132,5 x H280 x SP 1,2 | in 51.9 x H110.2 x TH 0.47
 B. Taglio su misura | Custom cut



FELTRI & TESSUTI | FELTS & FABRICS

CAT A: ECOfelt, PETfelt, Trevira, PETcolor, PETfabric
 CAT B: Tweed, Trace



SEGNI PARTICOLARI | DISTINGUISHING MARKS

Sezioni | Sections

+ cm 2 | in 0,78

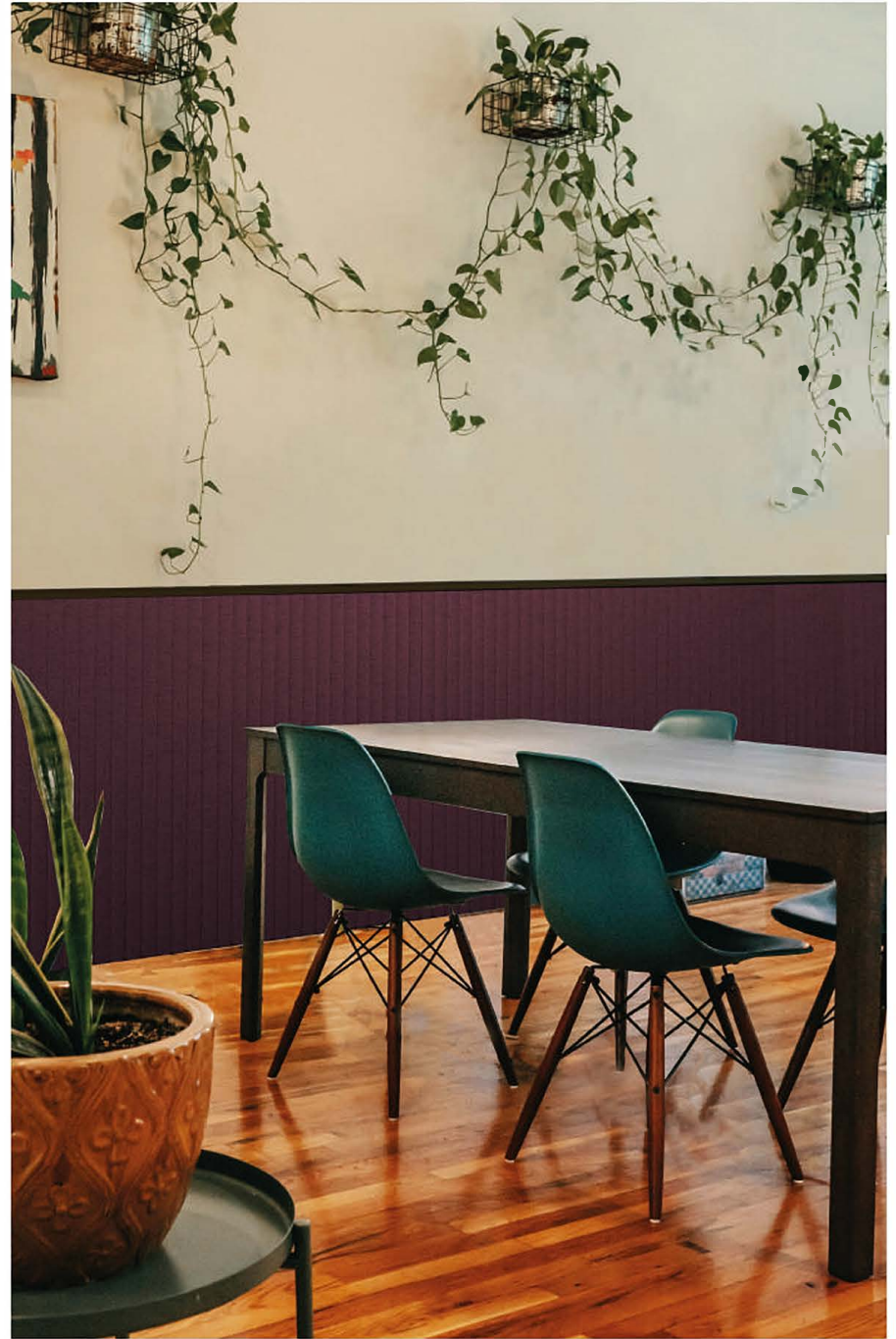
+ cm 4 | in 1,57

$\alpha_w = 0,25$ | NRC = 0,40

$\alpha_w = 0,70$ | NRC = 0,80

$\alpha_w = 0,95$ | NRC = 1





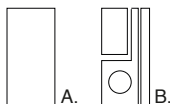


NEW!

ECORANGE W



PRODUCT CORE



A. cm 138 x H 280 x SP 1,9 | in 54.3 x H 110.2 x TH 0.74
 B. Taglio su misura | Custom cut



FELTRI & TESSUTI | FELTS & FABRICS

CAT A: ECOfelt, PETfelt, Trevira, PETcolor, PETfabric
 CAT B: Tweed, Trace



SEGNI PARTICOLARI | DISTINGUISHING MARKS

Sezioni | Sections

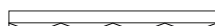
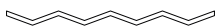
$\alpha_w = 0,25$ | NRC = 0,40

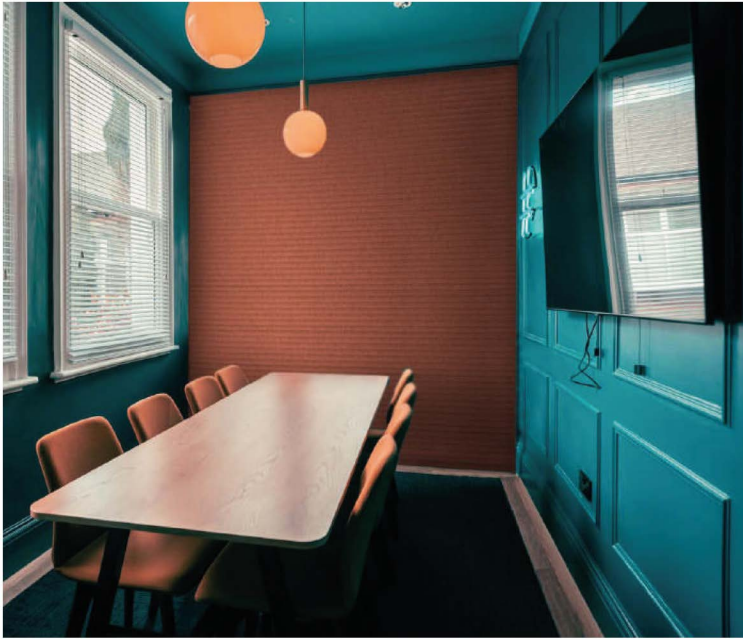
+ cm 2 | in 0,78

$\alpha_w = 0,70$ | NRC = 0,80

+ cm 4 | in 1,57

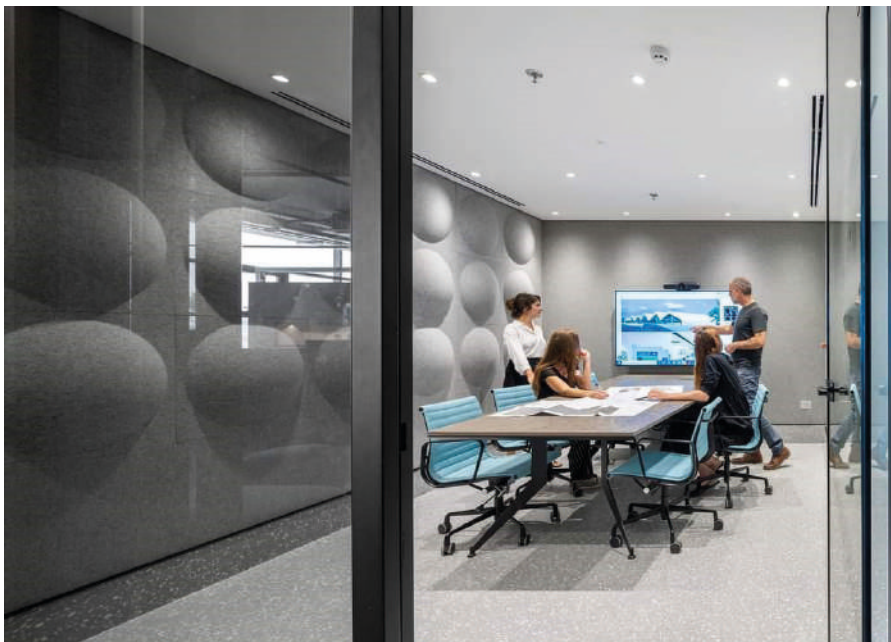
$\alpha_w = 0,95$ | NRC = 1











ECOROUND



PRODUCT CORE

Empty: cm 59,4 x 59,4 x 8 | in 23.4 x 23.4 x 3.1

Full: cm 59,4 x 59,4 x 5 | in 23.4 x 23.4 x 2 | $\alpha_w = 0,55$ | NRC = 0,60

Set di 2 | Set of 2



FELTRI & TESSUTI | FELTS & FABRICS

CAT A: ECOfelt, PETfelt, Velvet, Trevira, PETcolor, PETfabric

CAT B: Tweed, Trace



SEGNI PARTICOLARI | DISTINGUISHING MARKS

Sezione | Section



Vuoto | Empty



Pieno | Full





ECOBUBBLE



PRODUCT CORE

cm Ø 56 x SP 5 l in Ø 22 x TH 2

$\alpha_w = 0,80$

Set di 2 | Set of 2



FELTRI & TESSUTI | FELTS & FABRICS

CAT A: ECOfelt, PETfelt, Velvet, Trevira, PETcolor, PETfabric

CAT B: Tweed, Trace



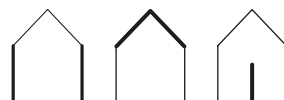
SEGNI PARTICOLARI | DISTINGUISHING MARKS

Sezione | Section



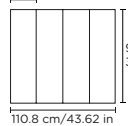


ECOSTRONG

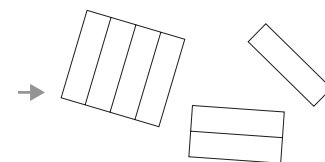


PRODUCT CORE

27.7 cm / 10.9 in



99.5 cm / 39.15 in



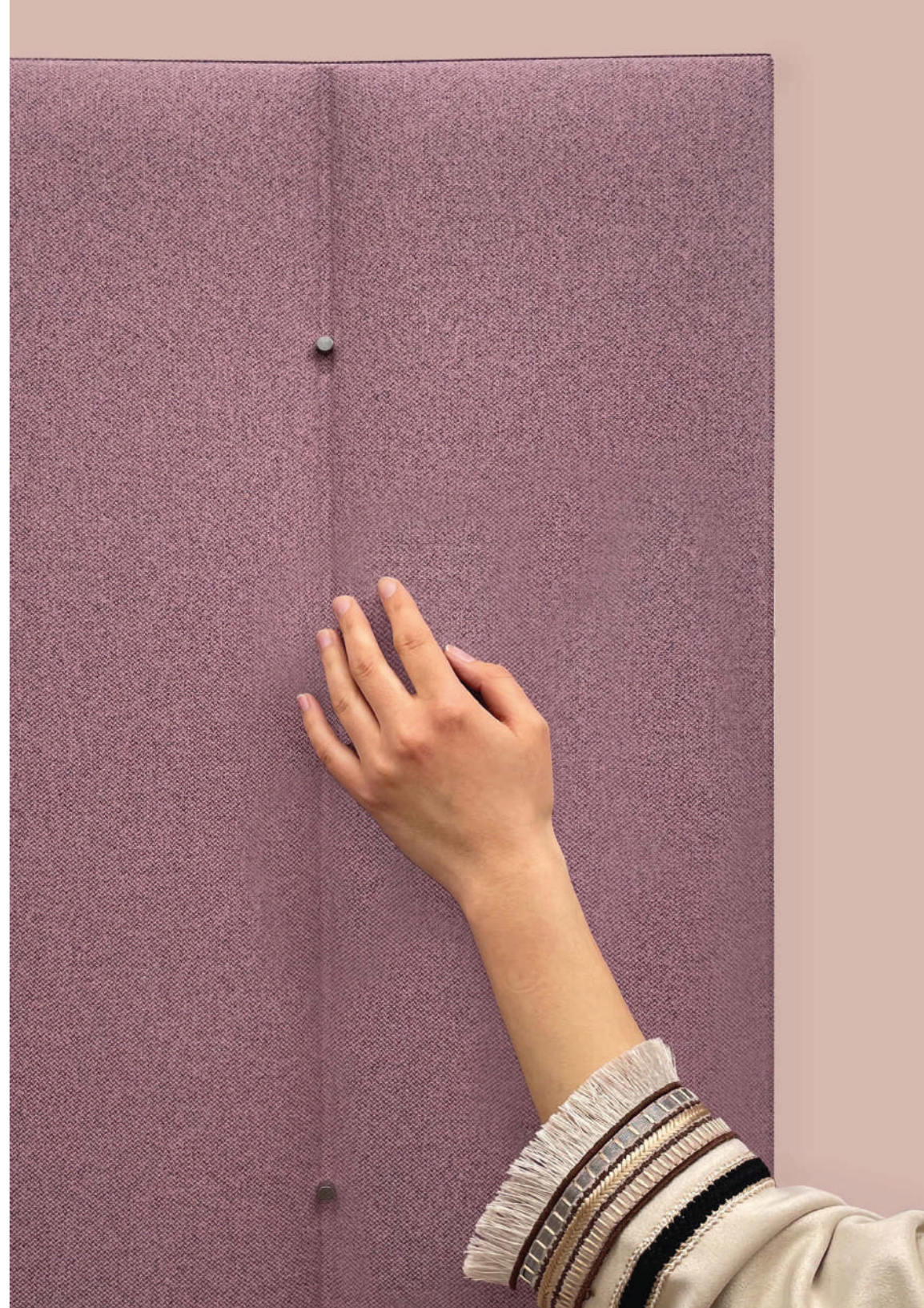
$\alpha_w = 0,85$ | $NRC = 0,79$



FELTRI & TESSUTI | FELTS & FABRICS

CAT A: ECOfelt, PETfelt, Velvet, Trevira, PETcolor, PETfabric

CAT B: Tweed, Trace





NEW!

JAZZ

Design by Debonademeo



PRODUCT CORE



cm 119 | 178,5 x H 119 | 178,5 x SP 0,6 | in 46.85 | 70.27 x H 46.85 | 70.27 x TH 0.24
O set di 6 pannelli | or set of 6 panels
 $\alpha_w = 0,35$ | NRC = 0,41

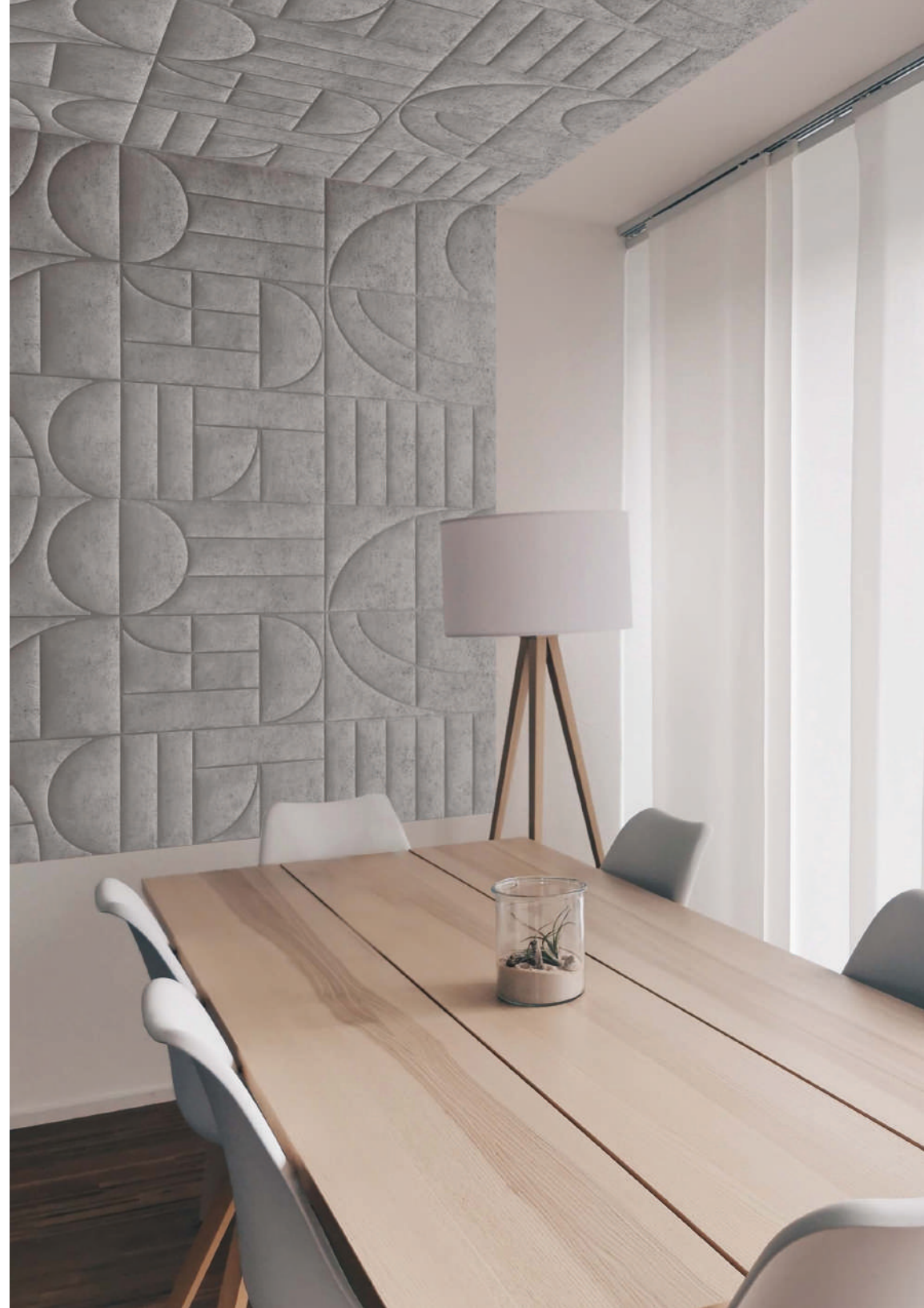


FELTRI & TESSUTI | FELTS & FABRICS

CAT A: ECOfelt, PETfelt, Velvet, Trevira, PETcolor, PETfabric
CAT B: Tweed, Trace



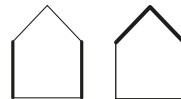




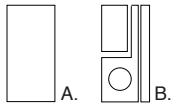


MILLERIGHE

Design by OnsiteStudio



PRODUCT CORE



A. cm 136 x H 280 x SP 1,3 | in 53.5 x H 110.2 x TH 0.51
 B. Taglio su misura | Custom cut



FELTRI & TESSUTI | FELTS & FABRICS

CAT A: ECOfelt, PETfelt, Trevira, PETcolor, PETfabric
 CAT B: Tweed, Trace



SEGNI PARTICOLARI | DISTINGUISHING MARKS

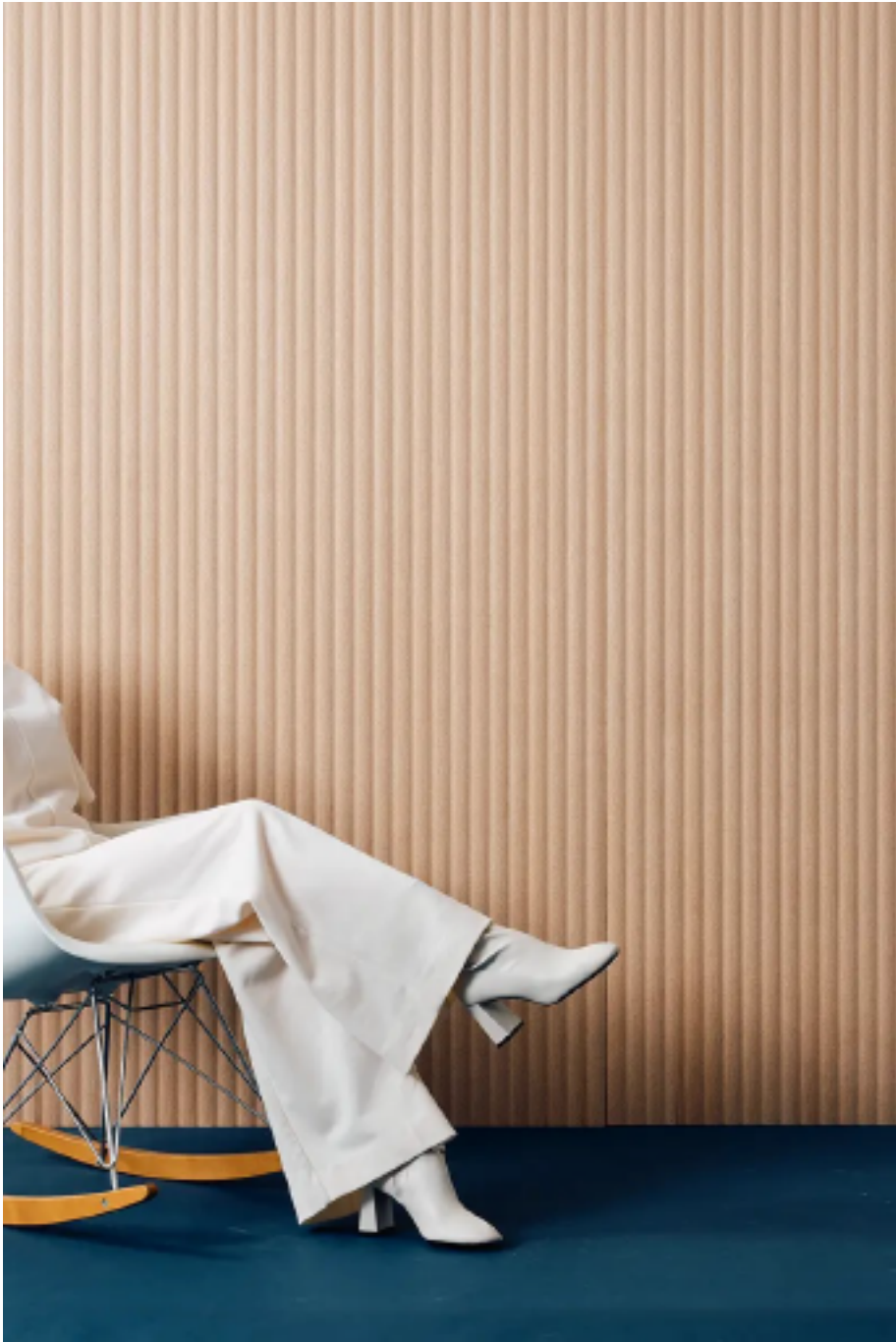
Sezioni | Sections

$\alpha_w = 0,25$ | NRC = 0,40

+ cm 2 | in 0,78
 $\alpha_w = 0,70$ | NRC = 0,80

+ cm 4 | in 1,57
 $\alpha_w = 1$ | NRC = 1

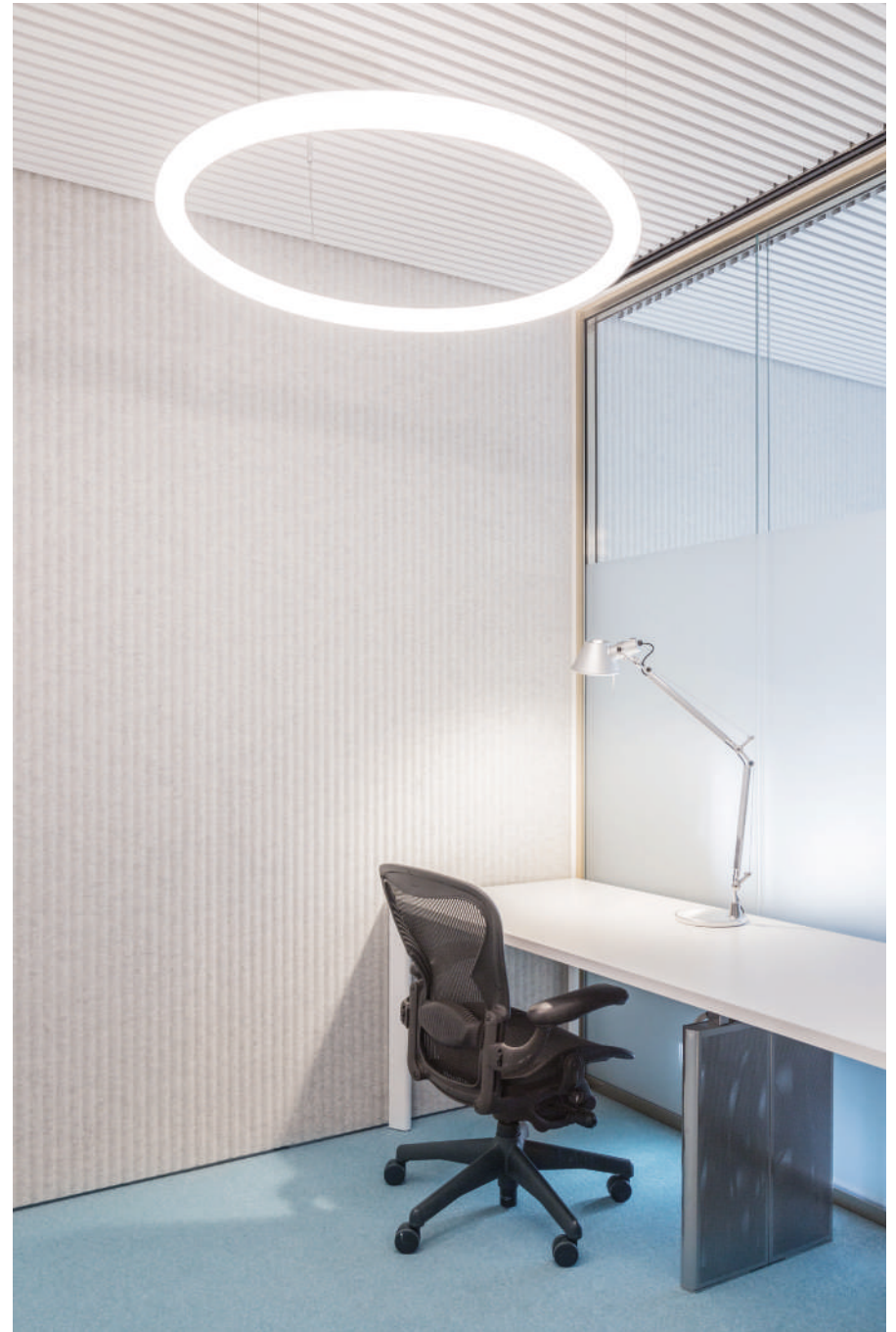




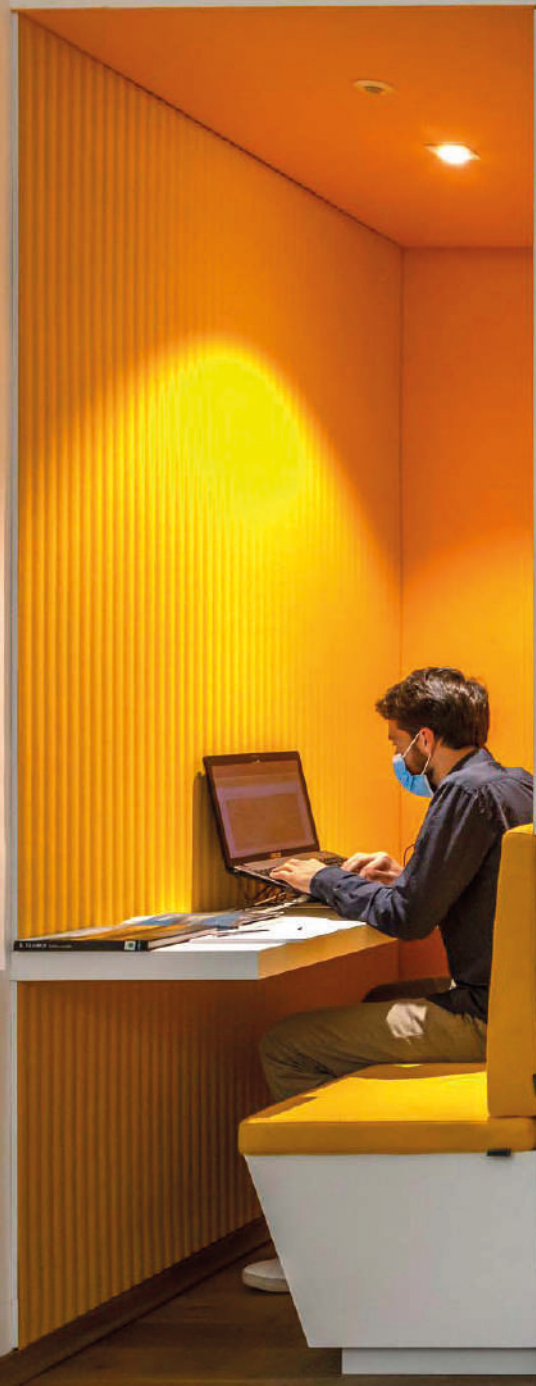










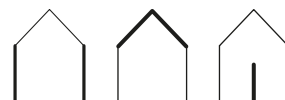






NEW!

WALL CUT-OUT



PRODUCT CORE



cm 120 x H 195 x SP 0,8 | in 47.2 x H 76.77 | 110.24 x TH 0.3
 cm 125 x H 280 x SP 0,8 | in 49.2 x H 110.24 x TH 0.3
 o Dimensioni custom | Custom dimension
 $\alpha_w = 0,40$

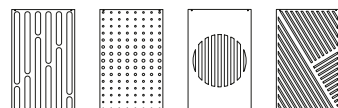


FELTRI & TESSUTI | FELTS & FABRICS

CAT A: ECOfelt, PETfelt, Velvet, Trevira, PETcolor, PETfabric
 CAT B: Tweed, Trace



SEGNI PARTICOLARI | DISTINGUISHING MARKS



...o Taglio su misura! | ...or Custom cut!

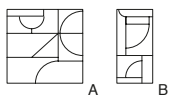




T-MADE COMPOSITION



PRODUCT CORE



A: cm L 200 x H 200 x SP 3 | 5 | in L 78.7 x H 78.7 x TH 1.18 | 1.96

B: cm L 100 x H 200 x SP 3 | 5 | in L 39.3 x H 78.7 x TH 1.18 | 1.96

Forme e dimensioni su misura | Custom shapes and dimensions

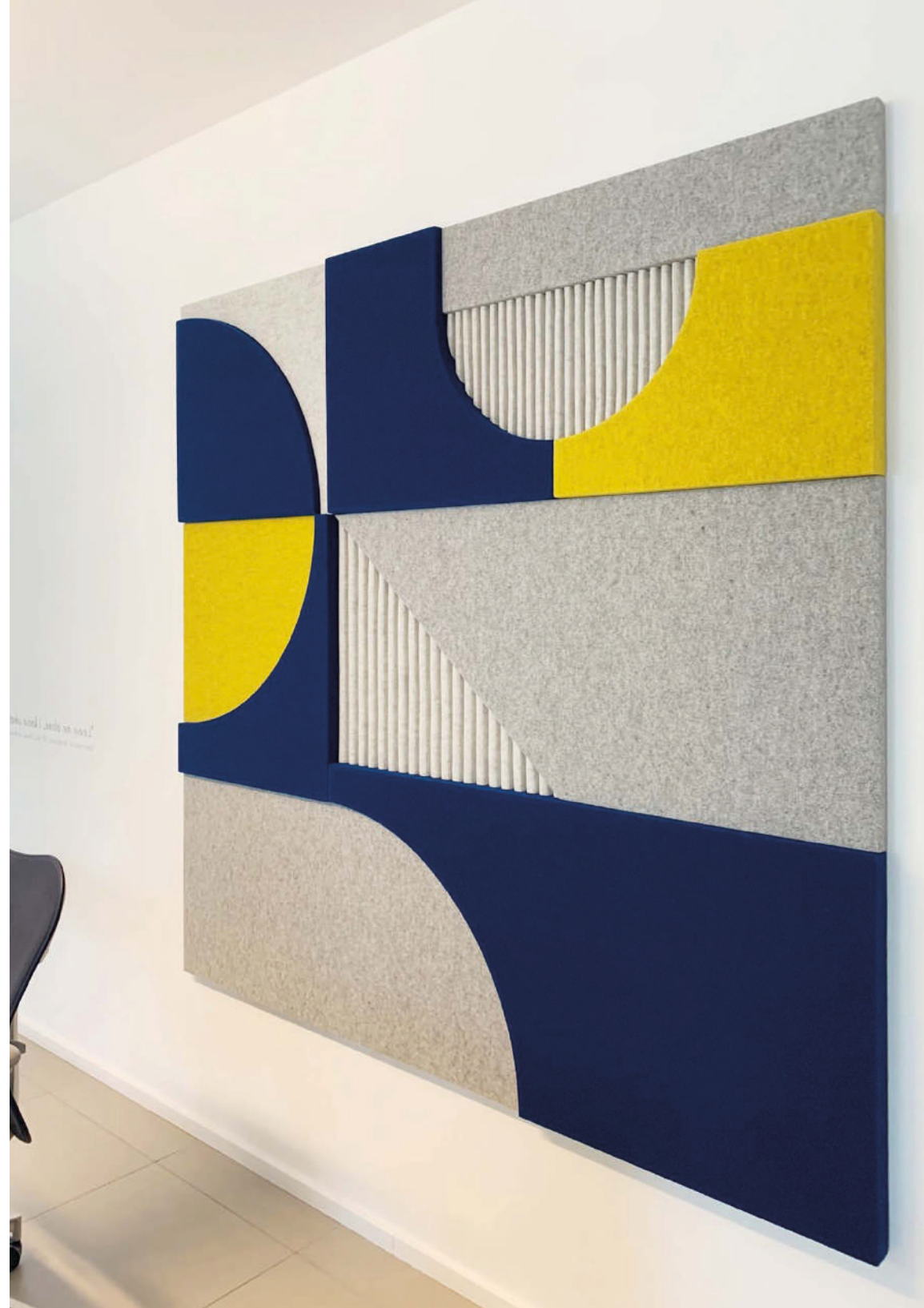
$\alpha_w = 0,70$ | $NRC = 0,80$

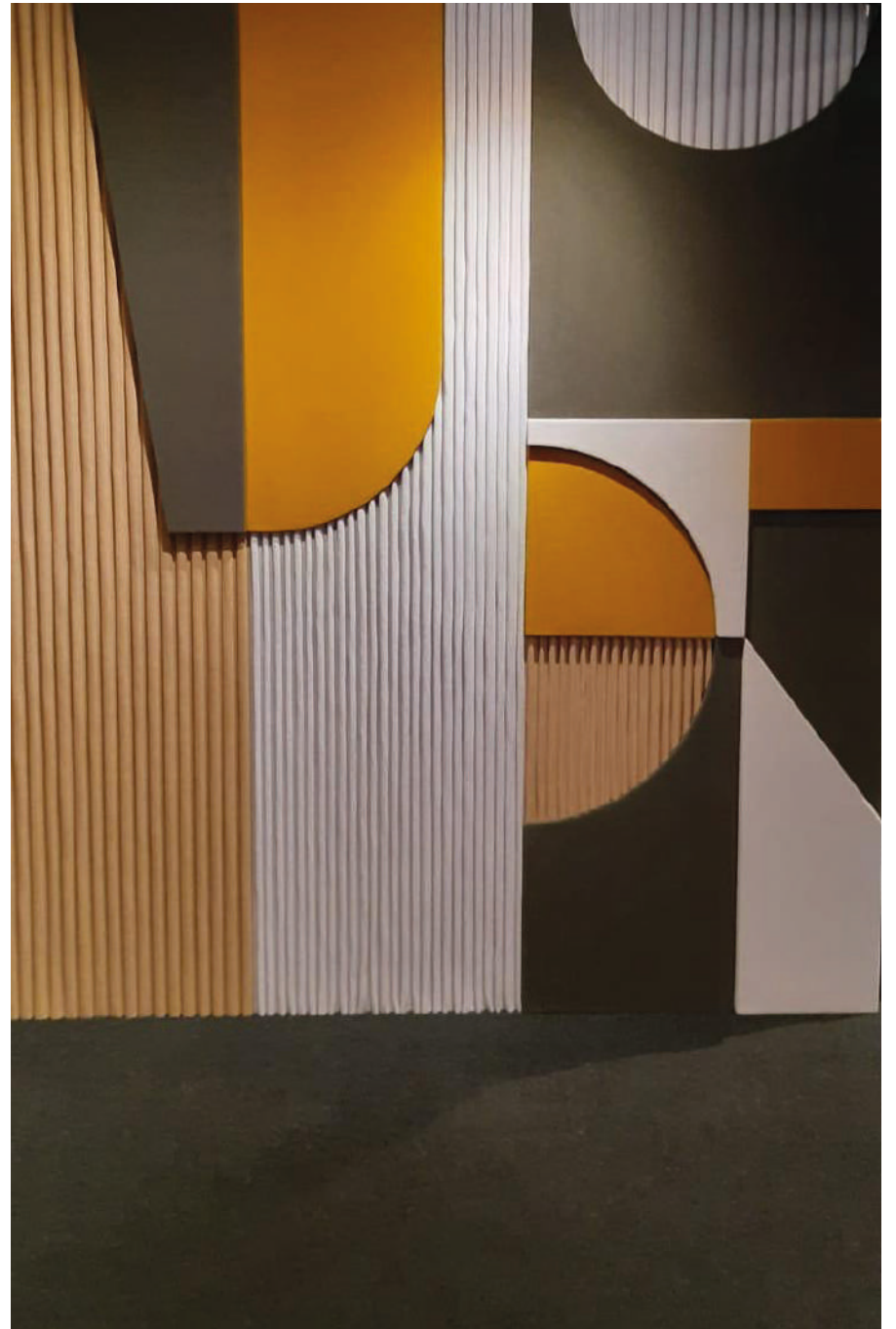


FELTRI & TESSUTI | FELTS & FABRICS

CAT A: ECOfelt, PETfelt, Velvet, Trevira, PETcolor, PETfabric

CAT B: Tweed, Trace PET







T-MADE HEXAGON



PRODUCT CORE

cm 69,25 | 138,55 x H 60 | 120 | in 27.3 | 54.55 x H 23.6 | 47.2
o Dimensione su misura | Custom dimension



FELTRI & TESSUTI | FELTS & FABRICS

CAT A: ECOfelt, PETfelt, Velvet, Trevira, PETcolor, PETfabric
CAT B: Tweed, Trace



SEGNI PARTICOLARI | DISTINGUISHING MARKS

cm 3 | in 1,18
 $\alpha_v = 0,70$ | NRC = 0,80

cm 5 | in 1,97
 $\alpha_w = 0,85$ | NRC = 0,90





T-MADE ROUND



PRODUCT CORE

cm Ø 60 | 80 | 100 | 120 | in Ø 23.6 | 31.5 | 39.4 | 47.2
o Dimensione su misura | Custom dimension



FELTRI & TESSUTI | FELTS & FABRICS

CAT A: ECOfelt, PETfelt, Velvet, Trevira, PETcolor, PETfabric
CAT B: Tweed, Trace



SEGNI PARTICOLARI | DISTINGUISHING MARKS

cm 3 | in 1,18
 $\alpha_v=0,70$ | NRC = 0,80

cm 5 | in 1,97
 $\alpha_v=0,85$ | NRC = 0,90







T-MADE SPHERE



PRODUCT CORE

cm Ø 30 | 50 | 70 | in Ø 11.81 | 19.68 | 27.55



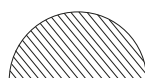
FELTRI & TESSUTI | FELTS & FABRICS

CAT A: ECOfelt, PETfelt, Velvet, Trevira, PETcolor, PETfabric
CAT B: Tweed, Trace



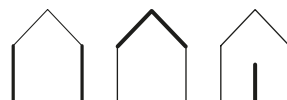
SEGNI PARTICOLARI | DISTINGUISHING MARKS

Sezione | Section





CUT-OUT BAFFLE



PRODUCT CORE



cm 120 x H 195 x SP 0,8 | in 47.2 x H 76.77 | 110.24 x TH 0.3
 cm 125 x H 280 x SP 0,8 | in 49.2 x H 110.24 x TH 0.3
 o Dimensioni custom | Custom dimension
 $\alpha_w = 0,40$

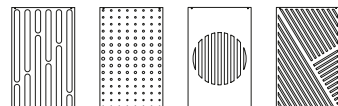


FELTRI & TESSUTI | FELTS & FABRICS

CAT A: ECOfelt, PETfelt, Velvet, Trevira, PETcolor, PETfabric
 CAT B: Tweed, Trace



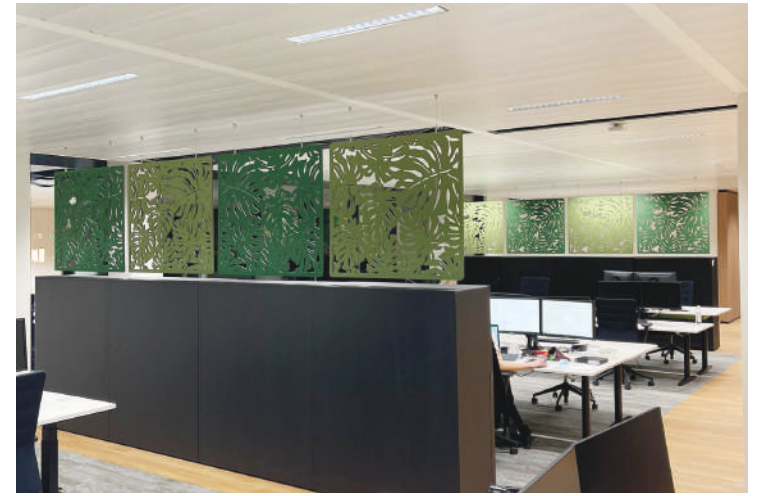
SEGNI PARTICOLARI | DISTINGUISHING MARKS



...o Taglio su misura! | ...or Custom cut!











NEW! **SPLIT**

Design by Robin Rizzini



PRODUCT CORE

cm 98 x H190 x SP 3,5 | in 38.58 x H74.8 x TH 0.87



FELTRI & TESSUTI | FELTS & FABRICS

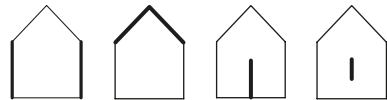
CAT A: ECOfelt, PETfelt, Velvet, Trevira, PETcolor, PETfabric
CAT B: Tweed, Trace



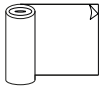




ECO&PET FELT ROLL



PRODUCT CORE



cm H 145 | in H 59
Taglio su misura | Custom cut



FELTRI & TESSUTI | FELTS & FABRICS

CAT A: ECOfelt, PETfelt



SEGNI PARTICOLARI | DISTINGUISHING MARKS

Spessori: mm 3 | 4,5 | 6 | 8 | Thickness: in 0,12 | 0,18 | 0,24 | 0,32
 $\alpha_w = 0,15 | 0,20 | 0,20 | 0,20$ | NRC = 0,15 | 0,20 | 0,20 | 0,20
Senza adesivo o con adesivo sul retro | Adhesive / Not-Adhesive back









CUSTOM FELT SHAPE

Design by YOU. Customize your own!



PRODUCT CORE

Forme e dimensioni su misura | Custom shapes and dimensions

Spessore: mm 4,5 | Thickness: in 0,18

$\alpha_w = 0,15$ | NRC = 0,15



FELTRI & TESSUTI | FELTS & FABRICS

CAT A: ECOfelt, PETfelt



SEGNI PARTICOLARI | DISTINGUISHING MARKS



Senza adesivo o con adesivo sul retro | Adhesive / Not-Adhesive back





